

**USING THE CLASS SCHEDULE**

This class schedule lists all credit-bearing courses offered at Grays Harbor College for Summer Quarter 2009. Arranged alphabetically by department, each course listing includes the line number, department, course number, section, credits, day(s), time and location along with any special type of class. Here is an example of a day course from our Mathematics Department (evening courses are **Highlighted**):

D862	MATH	107	A	Daily	10 00AM-10 50AM	800	I-TV	Koskela J
Item No.	Dept	Course	Section	Days	Time	Room	Course type	Instructor

**ACCOUNTING**

**ACCT& 201 Principles of Accounting I** 5  
*Recommended Preparation: CIS 102.*

*Prerequisites: MATH 098 or placement in MATH& 107 or higher. Completion of ENGL 095 or placement in ENGL& 101 or instructor permission.*

A foundation course for accounting program students and students planning to transfer to a four-year institution. The theory and practice of financial accounting are introduced and developed. Involves the measuring of business income and expenses, the accounting cycle, merchandising transactions, the sole proprietorship form of business organization and the relationship and preparation of the accounting statements. Includes emphasis on the accounting for current assets, property, plant and equipment. 5 lecture hours. Satisfies specified elective requirement for the AA degree.

W010 ACCT& 201 17 ARR ARR ARR W Frederickson

**ACCT& 203 Principles of Accounting III** 5  
*Prerequisite: ACCT& 202.*

A study of accounting information and its application and uses within the business organization. Includes the study of manufacturing operations with emphasis on determination, behavior and control of costs, cost-volume-profit analysis, budgeting and responsibility accounting, and management decision making for pricing, capital expenditures and short-run analysis. 5 lecture hours. Satisfies specified elective requirement for the AA degree.

W025 ACCT& 203 17 ARR ARR ARR W Frederickson

**ALLIED HEALTH**

**AHLTH 150 Comprehensive Medical Terminology** 5  
*Prerequisite: READ 090 or placement in college level reading.*

This course presents a comprehensive systems approach to the study of selected roots, prefixes, and suffixes; principles of word building; study of diagnostic, operative, and symptomatic terms of the various systems of the body. There is an emphasis on accurate spelling and pronunciation of all medical terms. Study includes common medical abbreviations, selected eponyms, clinical laboratory procedures and radiology procedures with associated terminology for each body system. 5 lecture hours. Vocational program course. May be used as a general elective in the AA degree.

W040 AHLTH 150 17 ARR ARR ARR W WAOL

**ANTHROPOLOGY**

**ANTH& 100 Survey of Anthropology** 5  
*Recommended Preparation: ENGL 095 or placement in ENGL& 101.*

Survey of the fields which make up anthropology: physical anthropology, archeology, prehistory and beginning of history including the earliest cultures and civilizations; ethnology/social anthropology, living and recent societies of the world. 5 lecture hours. Satisfies social science distribution area C requirement or specified elective for the AA degree.

W055 ANTH& 100 17 ARR ARR ARR W WAOL

**ART**

**ART& 100 Art Appreciation** 5

*Recommended Preparation: ENGL& 101. Prerequisites: ENGL 095 or placement in ENGL& 101; READ 090 or placement in college level reading.*

A study of the basic elements of visual form and their application to the variety and richness of art. Traditional and contemporary art from around the world, including architecture, design, painting, photography, and sculpture are examined in ways that provide meaningful responses to form and content. The broad objective of this course is for the student to recognize and become conversant with the basic concepts, styles, terminology, and elements of visual art. Major examples of two- and three-dimensional art will be examined and discussed. 5 lecture hours. Satisfies humanities distribution area A requirement or specified elective for the AA degree.

W070 ART& 100 17 ARR ARR ARR W WAOL

**ASTRONOMY**

**ASTRO 101 Astronomy** 5

*Prerequisite: MATH 098 or placement in college level math.*

This course provides an introduction to the universe beyond the Earth. The course begins with a study of the night sky and the history of astronomy. The course then explores the various objects seen in the cosmos beginning with a study of the solar system followed by stars, galaxies, and the evolution of the universe itself. 5 lecture hours. Satisfies science distribution area E requirement or specified elective for the AA degree.

W085 ASTRO 101 17 ARR ARR ARR W WAOL

**BIOLOGICAL SCIENCES**

**BIOL& 100 Survey of Biology** 5

*Prerequisites: ENGL 095 or placement in ENGL& 101; READ 090 or placement in college level reading.*

This is an introductory biology course intended for non-majors and will not serve as prerequisite for other biology courses. The course deals with the process of science, evolutionary concepts, and modern applications in biology and bioethics. 4 lecture hours; 2 lab hours. Satisfies science or lab requirement area A distribution or specified elective for the AA degree.

W130 BIOL& 100 17 ARR ARR ARR W Ibrahim M

**BUSINESS**

**BUS& 101 Introduction to Business** 5

*Prerequisite: MATH 060 and READ 080 or instructor permission.*

Introduction to Business is a general course designed to provide an understanding of how the American business system operates and its place in the economy. The course provides background for more effective and better use of business services in personal affairs as well as foundation for future courses in various business programs. 5 lecture hours. Satisfies specified elective requirement for the AA degree.

A718 BUS& 101 17 ARR ARR ARR W Zerr M

**BA 156 Fundamentals of Purchasing I** 4

Introduction to the basic principles of procurement and sourcing process and includes approaches for managing the procurement and sourcing process. 4 lecture hours. May be used as a general elective in the AA degree.

W100 BA 156 17 ARR ARR ARR W WAOL

**BA 157 Fundamentals of Purchasing II** 4

Provides an understanding of strategic supply management concepts, issues, and activities that support the procurement and sourcing process. 4 lecture hours. May be used as a general elective in the AA degree.

W115 BA 157 17 ARR ARR ARR W WAOL

**CHEMISTRY**

**CHEM& 121 Introduction to Chemistry w/Lab** 5

*Prerequisites: A grade of "C-" or better in MATH 095 or placement in MATH 098.*

A survey of general chemical principles, including elements and compounds, atomic structure and periodic properties, chemical reactions, energy, equilibrium and kinetics, solutions, acids and bases, and nuclear chemistry. This course is intended for allied health and natural resources majors, as well as those students pursuing an AA degree. It also serves as the prerequisite for CHEM& 161 for students who have not completed one year of high school chemistry. This course, with CHEM& 131, constitutes a terminal sequence in chemistry and does not prepare a student for a second year of chemistry. 4 lecture hours; 2 lab hours. Satisfies science or lab requirement are B distribution or specified elective for the AA degree.

W175 CHEM& 121 17 ARR ARR ARR W WAOL

**COMPUTER INFORMATION SYSTEMS**

**CIS 110 Introduction to Programming 5**  
*Prerequisites: MATH 098 or placement in MATH& 107 or higher; CIS 102 or concurrent enrollment; access to a computer capable of running the working edition of VB included with textbook. Basic knowledge of using computers (saving and copying files, using email).*

This course is designed to introduce students to computer programming. While Visual Basic is used as the programming language, the focus of the course is on general programming techniques and concepts that apply to most programming languages. Topics include: the event-driven program model, developing single-form applications, calculations and data manipulation, decision structures, repetition structures, procedures and functions. Students will design, code and debug programs of increasing complexity during the course. 4 lecture hours; 2 lab hours. Satisfies specified elective requirement for the AA degree.

W190 CIS 110 17 ARR ARR ARR W WAOL

**CRIMINAL JUSTICE**

**CJ& 101 Introduction to Criminal Justice 5**  
*Recommended Preparation: ENGL 095 or placement in ENGL& 101; READ 090 or placement in college level reading or instructor permission.*

A survey of the historical development of the criminal justice system to present-day practices. This course studies the development of the police, courts and correctional agencies in meeting the demands society has placed on them. Students will explore career opportunities at the federal, state and local levels. 5 lecture hours. Satisfies specified elective requirement for the AA degree.

W205 CJ& 101 17 ARR ARR ARR W WAOL

**CJUS 104 The Line Officer Function: Police & Corrections 5**

*Recommended Preparation: ENGL 095 or placement in ENGL& 101; READ 090 or placement in college level reading or instructor permission.*

An in-depth look at the basic duties and functions of police officers and correctional officers in cities and counties throughout the nation. Students will examine the responsibilities of the police and corrections from violator contact and arrest, through the court process. Discussions will focus on police encounters with the public, and the methods used by correctional officers in their dealing with prisoners. Emphasis will be placed on the impact that police and corrections have on our community today. 5 lecture hours. May be used as a general elective in the AA degree.

W220 CJUS 104 17 ARR ARR ARR W WAOL

**CJUS 110 Law and Justice 5**  
*Recommended Preparation: ENGL 095 or placement in ENGL& 101.*

Law and Justice will examine the basic trends in law and the social changes made within our communities. The focus will be the study and analysis of the concepts of family law, labor-relations law, welfare law, and civil rights laws as they impact each and every one of us. Same as POL S 110; students may not receive credit for both. 5 lecture hours. Satisfies specified elective requirement for the AA degree.

W235 CJUS 110 17 ARR ARR ARR W WAOL

**EARLY CHILDHOOD EDUCATION**

**ECE 101 Introduction to Childcare 2**  
 This course provides a foundation for learning within the first six months of employment in the ECE field and covers these basics: optimal child growth and development, child guidance and health and safety in ECE settings. 2 lecture hours. May be used as a general elective in the AA degree.

W265 ECE 101 17 ARR ARR ARR W WAOL

**ECE 103 Guiding the Behavior of Young Children 3**  
*Prerequisite: EDUC& 114.*

Our environment and our interactions with each other impact our lives from the time we are born until we die. Becoming aware, understanding and applying the foundational elements of guidance will not only impact our relationships with young children but with all people whom we come in contact with throughout our lives. This course explores the observation of human behavior and the interpretations of meaning. We will examine issues of cultural relevancy, impacts of oppression, personal history, and preferences surrounding our approach to guidance. Additionally, we will attempt to discover possible responses to varying perceived situations by becoming aware of how our values impact relationships and inform our work with young children. 3 lecture hours. May be used as a general elective in the AA degree.

W280 ECE 103 17 ARR ARR ARR W WAOL

**ECE 111 Methods of Curriculum Care 3**  
 Curriculum development is designed to introduce students to the elements of planning. Emphasis is on integrating a variety of methods, materials, and activities into curriculum plans meeting the needs of young children. 3 lecture hours. May be used as a general elective in the AA degree.

W295 ECE 111 17 ARR ARR ARR W WAOL

**ECE 112 Health, Nutrition and Safety for Young Children 3**

This course helps students understand factors contributing to the health of young children. It assists students' development of skills necessary to promote health, safety and good nutrition in ECE environments. 3 lecture hours. May be used as a general elective in the AA degree.

W310 ECE 112 17 ARR ARR ARR W WAOL

**ECE 113 Family Dynamics and Culture 3**

ECE teachers understand families as the primary context of child learning and development. This course teaches students to understand, respect and deal with the diversity in family structure and values as they impact the professional ECE environment. The course considers issues and social impacts which can affect child behavior and learning in an ECE environment. 3 lecture hours. May be used as a general elective in the AA degree.

W325 ECE 113 17 ARR ARR ARR W WAOL

**ECE 114 Issues and Trends in ECE 3**

This course helps students explore, understand and analyze issues and challenges in ECE as they affect the education and care needs of preschool age children. The course will survey the scope, depth and breadth of the field as these issues impact teaching and care giving for young children in an ECE environment. 3 lecture hours. May be used as a general elective in the AA degree.

W340 ECE 114 17 ARR ARR ARR W WAOL

**EDUC& 114 Child Development 3**

Child Growth and Development from birth to age six including the physical, emotional, cultural, cognitive and creative age-related changes with a focus on the development of a sense of self. 3 lecture hours. May be used as a general elective in the AA degree.

W370 EDUC& 114 17 ARR ARR ARR W WAOL

**EARTH SCIENCE**

**EARTH 102 Earth Science 5**

*Recommended Preparation: ENGL 095 or placement in ENGL& 101. Prerequisite: MATH 095 or placement in MATH 098.*

This course provides an introduction to the Earth and the processes that shape our planet. A major theme of the course is how different aspects of the Earth system interact with each other. Selected topics in four basic areas: astronomy, oceanography, meteorology, and geology, and their relation and interaction with the Earth system will be explored. 5 lecture hours. Satisfies science distribution area D requirement or specified elective for the AA degree.

W250 EARTH 102 17 ARR ARR ARR W WAOL

**ECONOMICS**

**ECON& 202 Macro Economics 5**

*Prerequisites: MATH 060; READ 080 or instructor permission.*

A macroeconomic study of the U.S. economy as a system for solving the fundamental problems of how a society uses its material resources. Emphasis is given to national income, inflation, unemployment, international trade, business cycles, and the monetary system. 5 lecture hours. Satisfies social science distribution area B requirement or specified elective for the AA degree.

W360 ECON& 202 17 ARR ARR ARR Zerr M

## Summer 2009

### ENGLISH

#### ENGL 060 English Language Study 5

*Recommended Preparation:* CIS 100 or CIS 101 or concurrent enrollment.  
*Prerequisite:* Placement in ENGL 060 or instructor permission.

ENGL 060 is a basic composition course designed to develop those writing/sentence skills necessary in both everyday writing and subsequent college writing through classroom exercises, group problem-solving, and short writing assignments. Skills gained in this course should help students improve their ability to perform such tasks as writing short-answer tests, brief responses to readings, and brief papers. Designed as preparation for ENGL 095. 5 lecture hours.

W385 ENGL 060 17 ARR ARR ARR Winsor S

#### ENGL 095 Writing Fundamentals 5

*Prerequisite:* Appropriate English placement score or a grade of "C-" or better in ENGL 060.

ENGL 095 is a developmental course that focuses on a review of writing fundamentals including organization, sentence structure and usage, vocabulary, spelling, and grammar. Writing assignments are generally limited to the paragraph. Skills gained in this course should help students improve their ability to write logically developed short-essay tests and brief, formal summaries and reports. 5 lecture hours.

W400 ENGL 095 17 ARR ARR ARR Lerych L

#### ENGL 252 Survey of World Literature 5

*Prerequisite:* A grade of "C-" or better in ENGL& 101.

Survey of World Literature covers literary selections from a wide variety of the world's cultures. Specifically, it addresses stories, poems and plays from Africa, Asia, the Americas, Europe and the Middle East. It also covers literary genre, critical methodologies, research, and critical thinking. 5 lecture hours. Satisfies humanities distribution area D requirement or specified elective requirement for the AA degree.

W445 ENGL 252 17 ARR ARR ARR W WAOL

#### ENGL 253 Multicultural Literature in America 5

*Prerequisite:* A grade of "C-" or better in ENGL& 101.

This course is an introduction to the cultural diversity of American literature. Celebrating the rich variety of American voices, the course will focus on the literary contribution of African Americans, Asian Americans, Chicanos/Latinos, European Americans, and Native Americans. It will introduce the literary genres of poetry, fiction, drama, and essay as it explores the diverse cultural heritage, currents, perspectives, and issues that have shaped the consciousness of the United States. 5 lecture hours. Satisfies specified elective requirement for the AA degree.

W460 ENGL 253 17 ARR ARR ARR W WAOL

#### ENGL& 101 English Composition I 5

*Prerequisite:* Appropriate English placement test score or a grade of "C-" or better in ENGL 095.

ENGL& 101 emphasizes the basic rhetorical principles and development of expository and argumentative prose. Included is an introduction to the research methods necessary for evidence-backed writing. Skills gained in this course should help students improve their performance of such tasks as writing for a variety of purposes and audiences, as well as writing informative and persuasive essays and research-backed reports, projects and papers. 5 lecture hours. Satisfies writing skills requirement for the AA degree.

W415 ENGL& 101 17 ARR ARR ARR Lerych L

#### ENGL& 102 English Composition II 5

*Prerequisite:* A grade of "C-" or better in ENGL& 101.

ENGL& 102 is a continuation of writing skills practiced in ENGL& 101 directed towards writing expository/argumentative and critical/analytical themes focusing on literature. The course also continues the instruction of research methods begun in ENGL& 101, emphasizing the preparation of a research paper. Skills gained in this course should improve students' performance in such tasks as writing for various purposes and audiences, writing critically and analytically in a variety of settings and creating formal, written research projects. 5 lecture hours. Satisfies writing skills requirement for the AA degree.

W430 ENGL& 102 17 ARR ARR ARR Winsor S

### HEALTH PROMOTION & FITNESS

#### HPF 101 Health and Wellness 5

This course encompasses a total wellness concept of one's physical, mental and emotional well being. Students will examine major health issues of contemporary society. Students will also learn to make responsible lifestyle decisions that will directly affect their quality of life and attainment of well being. 5 lecture hours. May be used as a general elective in the AA degree or to satisfy PE requirement for all degrees.

W490 HPF 101 17 ARR ARR ARR Arthur G

W495 HPF 101 27 ARR ARR ARR W WAOL

### HISTORY

#### HIST& 116 Western Civilization I 5

*Recommended Preparation:* READ 090 or placement in college level reading; ENGL 095 or placement in ENGL& 101, or instructor permission. Completion of or concurrent enrollment in ENGL& 101.

A survey of the Greco-Roman and Judeo-Christian roots of Western Civilization emphasizing the cultures, societies, philosophies, and politics of ancient civilizations as well as the controversies of early Christianity. 5 lecture hours. Satisfies social science distribution area A requirement or specified elective for the AA degree.

W475 HIST& 116 17 ARR ARR ARR W WAOL

### HUMAN SERVICES

#### HUST 202 Counseling Special Populations 5

*Prerequisite:* HUST 203 or instructor permission.

Needs of and treatment for special consumer populations such as persons of diversity including children and families, couples, the elderly, persons with physical disabilities, sexual minorities, developmental disabilities and cultural and ethnic minorities. Focus will be on the recommended treatment of choice for special populations with diverse backgrounds and needs. 5 lecture hours. Vocational program course. May be used as a general elective in the AA degree.

W505 HUST 202 17 ARR ARR ARR W WAOL

### LIBRARY

#### LIB 120 Learning for the 21st Century 5

Emphasis will be on building the skills and techniques for successful life-long learning and identifying personal learning styles and strengths that facilitate learning in an on-line environment. Through a quarter-long research project on a global issue, participants will examine various strategies for locating, evaluating, and applying information resources in the research process with attention to information policy issues like censorship and freedom of information. 5 lecture hours. Satisfies specified elective requirement for the AA degree.

W520 LIB 120 17 ARR ARR ARR W WAOL

### MATHEMATICS

#### MATH 060 Fundamentals of Arithmetic 5

*Prerequisite:* Appropriate placement test score or instructor permission.

This course is designed for students who need to strengthen their skills in arithmetic. Mathematical reasoning will be used to define and solve problems. The specific course content includes topics on fractions, decimals, ratios, proportions, percents, English and metric measurements, area, volume and perimeter of geometric objects, with an introduction to integer arithmetic. Effective communication of these ideas and application to everyday situations are part of the curriculum. Problem solving strategies will be stressed. 5 lecture hours.

W535 MATH 060 17 ARR ARR ARR W WAOL

#### MATH 070 Pre-Algebra 5

*Prerequisites:* A grade of "C-" or better in MATH 059 or MATH 060 or appropriate placement test score and placement in READ 090 or concurrent enrollment in READ 080.

This course is intended for students who have few current algebra skills. Topics include fractions, real number arithmetic, exponents, order of operations, algebraic expressions, linear equations and inequalities in one variable, working with units, formulas, and percents. The standard problem solving method, which will be used throughout the algebra sequence, is presented and used to solve basic applications. A scientific calculator is required for this course and graphing calculators are not allowed on tests. 5 lecture hours.

W550 MATH 070 17 ARR ARR ARR W WAOL

#### MATH 095 Elementary Algebra 5

*Prerequisites:* A grade of "C-" or better in MATH 070 or appropriate placement test score.

Elementary Algebra includes solution, graphing and application of linear and quadratic equations of one and two variables, exponent rules, scientific notation, polynomials, and factoring. 5 lecture hours.

W565 MATH 095 17 ARR ARR ARR W WAOL

**MATH 098 Intermediate Algebra** 5

*Prerequisites: A grade of "C-" or better in MATH 094 or MATH 095 or appropriate placement test score, and placement at college level reading or READ 090 or concurrent enrollment in READ 090.*

This course is intended to prepare students for work in College Level math and math related subjects. It serves as a prerequisite to MATH& 107, MATH& 111, MATH 131, MATH 132, and MATH& 141. Topics include functions and equations containing linear, quadratic, polynomial, rational and radical expressions; inequalities, linear systems, exponentials and logarithms; and applications involving basic science and business mathematical models. 5 lecture hours.

W580 MATH 098 27 ARR ARR ARR W WAOL

**MATH& 107 Math in Society** 5

*Prerequisites: MATH 098 or appropriate placement score or instructor permission.*

This course covers a variety of topics including financial models and money management, statistical reasoning, measures of central tendency and variation, the normal distribution and exponential growth and decay. The material is presented at a level accessible to students who have successfully completed a course in intermediate algebra or the equivalent. MATH& 107 is intended for students who wish to complete the quantitative reasoning requirement of the AA degree. It is taught at approximately the same level as college algebra and finite mathematics, but the material is intended to be more practical for the liberal arts student. MATH& 107 does not satisfy the prerequisites for either MATH& 148 or MATH 260 and is not a candidate for a science distribution for the AA degree. 5 lecture hours.

W595 MATH& 107 17 ARR ARR ARR W WAOL

**MUSIC**

**MUSC& 105 Music Appreciation** 5

*Prerequisites: READ 090 or placement in college level reading; ENGL 095 or placement in ENGL& 101.*

The purpose of this course is to expand the student's musical listening pleasure through a brief study of the elements of music and the major periods of music history with an emphasis on the Classical and Romantic Periods. Exploration of music from other cultures will also be included. 5 lecture hours. Satisfies humanities distribution area C requirement or specified elective for the AA degree.

W610 MUSC& 105 17 ARR ARR ARR W WAOL

**NUTRITION**

**NUTR& 101 Human Nutrition** 5

*Prerequisite: Grade of "C" or better in BIOL& 100 or BIOL& 160 or instructor permission.*

A study of the structure, function, and metabolism of nutrients and their roles in preventing diseases related to nutrient deficiency in healthy people. Analysis of food labels and diet planning. This course is intended for science, nonscience, and health sciences students. 5 lecture hours. Satisfies specified elective requirement for the AA degree.

W625 NUTR& 101 17 ARR ARR ARR Ibrahim M

**OFFICE TECHNOLOGY**

**OFTC 124 Keyboard Skillbuilding I** 2

*Prerequisite: CIS 101 or keyboarding ability.*

This individualized program builds keyboarding skills with a computer program that focuses on technique, speed, and accuracy through planned drill and practice exercises. 4 lab hours. Vocational program course. May be used as a general elective in the AA degree.

W640 OFTC 124 17 ARR ARR ARR Miller D

**OFTC 125 Keyboard Skillbuilding II** 2

*Prerequisite: OFTC 124.*

This individualized program builds keyboarding skills with a computer program that focuses on technique, speed, and accuracy through planned drill and practice exercises. 4 lab hours. Vocational program course. May be used as a general elective in the AA degree.

W655 OFTC 125 17 ARR ARR ARR Miller D

**OFTC 126 Keyboard Skillbuilding III** 2

*Prerequisite: OFTC 125.*

This individualized program builds keyboarding skills with a computer program that focuses on technique, speed, and accuracy through planned drill and practice exercises. 4 lab hours. Vocational program course. May be used as a general elective in the AA degree.

W670 OFTC 126 17 ARR ARR ARR Miller D

**PHILOSOPHY**

**PHIL& 101 Introduction to Philosophy** 5

*Recommended Preparation: READ 090 or placement in college level reading; ENGL 095 or placement in ENGL& 101.*

An introduction to the oldest of academic disciplines, PHIL& 101 explores the discipline's basic issues and traditional tools: the nature of reality, the limits of knowledge, the meaning of human value, and, as its primary tool, the rigorous employment of rational argument. 5 lecture hours. Satisfies humanities distribution area D requirement or specified elective for the AA degree.

W685 PHIL& 101 17 ARR ARR ARR W WAOL

**POLITICAL SCIENCE**

**POLS& 202 American Government** 5

*Recommended Preparation: READ 090 or placement in college level reading; ENGL 095 or placement in ENGL& 101, or instructor permission. Completion of or concurrent enrollment in ENGL& 101.*

An introductory survey concerned with the political operation of the government of the United States, including origins of the Declaration of Independence and the Constitution, a close review of the three branches of government, the electoral process and a critique of current political issues. 5 lecture hours. Satisfies social science distribution area B requirement or specified elective for the AA degree.

W700 POLS& 202 17 ARR ARR ARR Bush D

**PSYCHOLOGY**

**PSYC& 100 General Psychology** 5

*Recommended Preparation: Placement in ENGL& 101.*

An introduction to psychology utilizing lectures and group exercises. Deals with the psychology of behavior, development, learning, cognition, motivation and emotion, perception, memory, and both normal and abnormal personalities. Provides an overview of modern psychology in terms of biological, social and intrapsychic factors. 5 lecture hours. Satisfies social science distribution area D requirement or specified elective for the AA degree.

W715 PSYC& 100 17 ARR ARR ARR W WAOL

**PSYC& 200 Lifespan Psychology** 5

*Prerequisite: PSYC& 100 or instructor permission.*

This course presents a comparative look at the various human development models. Students will have an opportunity to gain knowledge of the various stages of human development. This course typically fulfills basic requirements in human development for nursing, psychology and related occupations. 5 lecture hours. Satisfies specified elective requirement for the AA degree.

W730 PSYC& 200 17 ARR ARR ARR W WAOL

**READING**

**READ 090 College Preparatory Reading/Study I** 5

*Prerequisite: Appropriate reading placement test score or instructor permission.*

Extensive reading, in texts and on computer, of college preparation (10.0 - 12.9 grade level) academic, vocational, Internet, and general interest passages coupled with short writing assignments to build literal and inferential reading skills, vocabulary, and basic techniques such as note-taking, memory enhancement and exam preparation. 3 lecture hours; 4 lab hours.

W735 READ 090 17 ARR ARR Barker K

**SOCIOLOGY**

**SOC& 101 Introduction to Sociology** 5

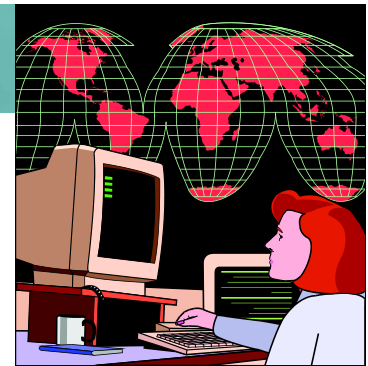
*Recommended Preparation: ENGL 095 or placement in ENGL& 101.*

An introduction to the principles, concepts, theories and methods of the sociological perspective. Emphasis is placed upon relating sociological ideas to national, community, and individual levels. 5 lecture hours. Satisfies social science distribution area C requirement or specified elective for the AA degree.

W745 SOC& 101 17 ARR ARR ARR Portmann C



WASHINGTON ONLINE



Grays Harbor College Virtual Campus —  
The Campus that comes to you!

### ARE YOU???

- A student needing a class but without the time slot to schedule it?
- A working professional who doesn't have the time to attend regularly scheduled classes?
- A stay-at-home parent with childcare responsibilities?
- A student who has difficulties commuting or managing the campus?
- Anyone else living a complicated life and wanting to go to college?

Then you should look into taking a class from the WashingtonOnline Virtual Campus of Grays Harbor College at <http://www.waol.org>

### Classroom Information (Summer 2009)

Enrollment Opens	April 29, 2008
Classrooms open:	June 18, 2009
Enrollment ends:	June 25, 2009
Instruction begins:	June 25, 2009
Instruction ends:	August 19, 2009

### Tuition and Fees Due (Summer 2009)

Register up to June 29, 2009  
Tuition and fees due July 1, 2009

**Registration begins  
April 29, 2009**



Login instructions

**New Students - To Login**

Username = your student ID number

Password = first 5 letters of your last name  
(lowercase, no spaces or punctuation)

**Returning Students - To Login**

Username = your student ID number

Password = the same password you used last quarter

**Password example**

**Johnson|Johns.Lee|Lee.O'Reilly|oel**

For more information about GHC's Washington Online Opportunities: Call Nancy DeVerse at 360-538-4030.